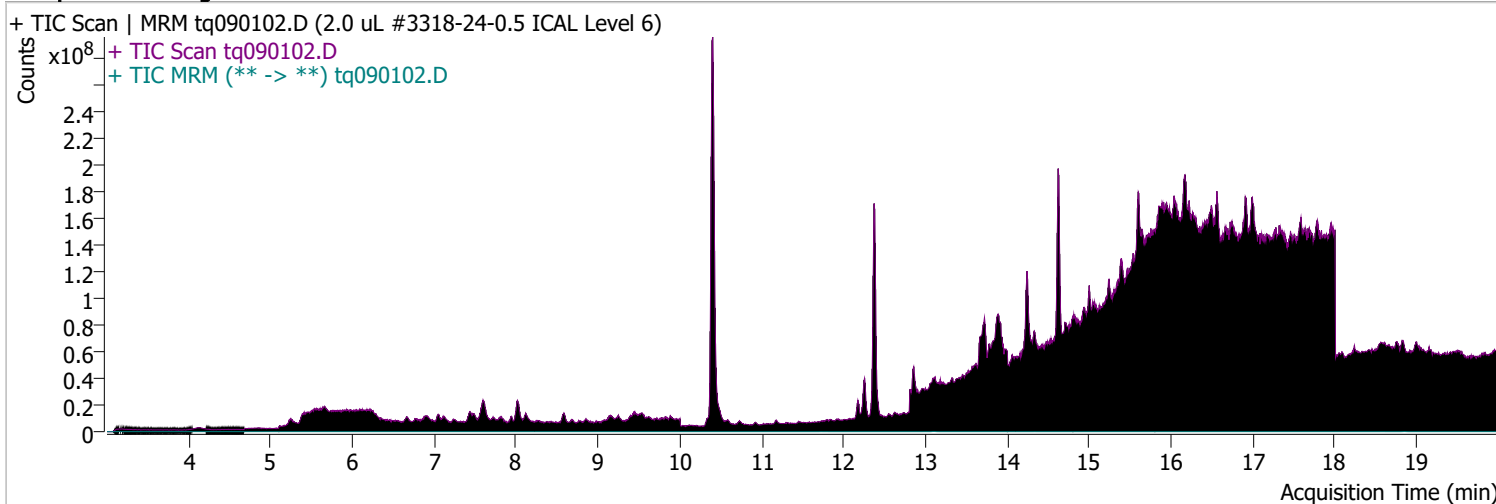


Quantitative Analysis Sample Report

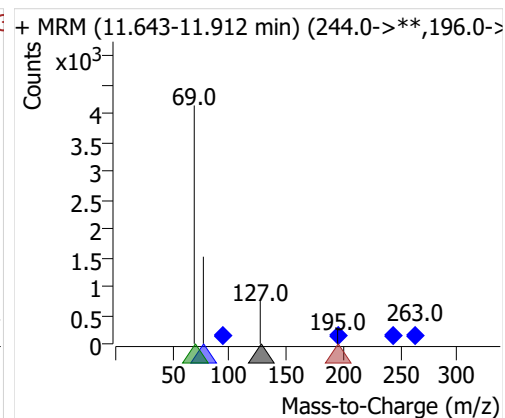
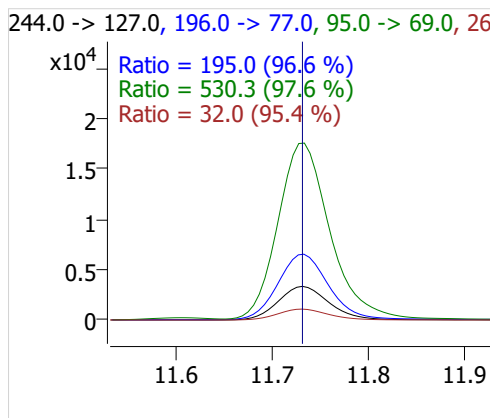
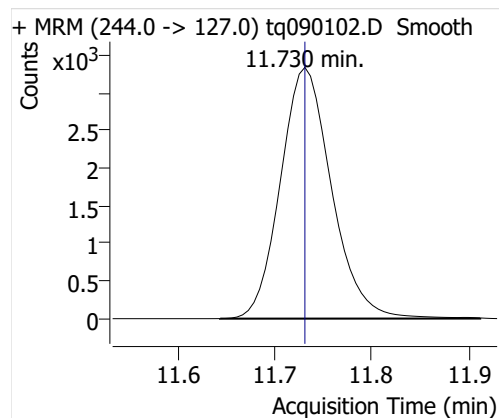
Batch Path	D:\MassHunter\GCMS\1\data\01sep22\QuantResults\01sep22.batch.bin		
Analysis Time	9/14/2022 9:28 AM	Analyst Name	DESKTOP-R0LAL7E\analyst
Report Time	9/22/2022 10:51:18 AM	Reporter Name	DESKTOP-R0LAL7E\analyst
Last Calib Update	9/6/2022 9:10 AM	Batch State	Processed
Quant Batch Version	10.1	Quant Report Version	10.1
Acq. Time	9/1/2022 12:37 PM	Data File	tq090102.D
Sample Type	CC	Sample Name	2.0 uL #3318-24-0.5 ICAL Level 6
Dilution	1	Acq. Method	tq22m0831

Sample Chromatogram

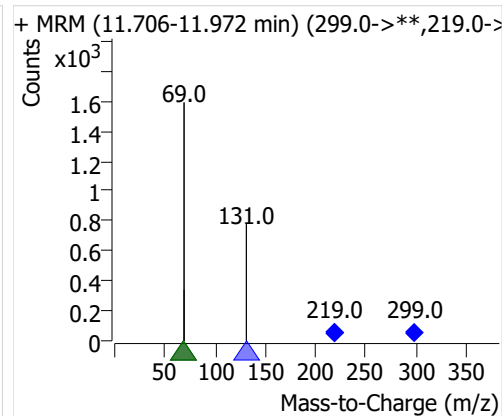
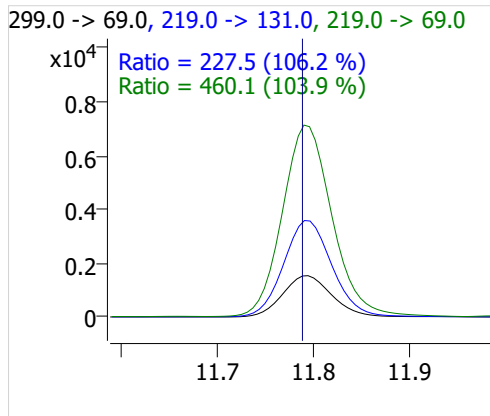
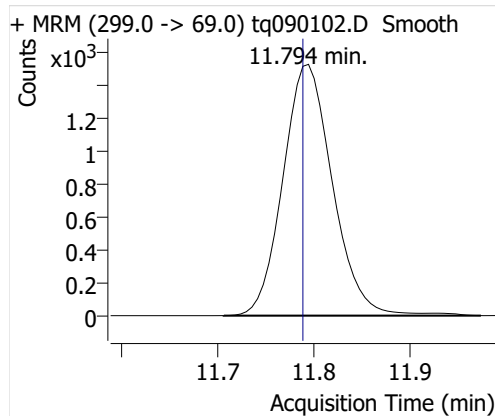


Compound	ISTD	RT	Resp.	ISTD Resp.	Resp. Ratio	Final Conc	Units
4:2 FTOH	6:2 FTOH-C13	11.730	12294	30685	0.4007	0.9631	ng
5:2sFTOH	6:2 FTOH-C13	11.794	5487	30685	0.1788	1.0137	ng
7:2sFTOH	6:2 FTOH-C13	13.095	10499	30685	0.3421	0.9058	ng
6:2 FTOH	6:2 FTOH-C13	13.129	21684	30685	0.7067	0.9165	ng
8:2 FTOH-C13	6:2 FTOH-C13	14.330	9048	30685	0.2949	0.9542	ng
8:2 FTOH	6:2 FTOH-C13	14.337	5979	30685	0.1949	0.8668	ng
10:2 FTOH	6:2 FTOH-C13	15.405	1891	30685	0.0616	0.8199	ng
12:2 FTOH	6:2 FTOH-C13	16.386	8121	30685	0.2647	0.9289	ng
NMeFOSA	6:2 FTOH-C13	18.585	4974	30685	0.1621	0.9033	ng
NEtFOSA	6:2 FTOH-C13	18.847	22235	30685	0.7246	0.9023	ng

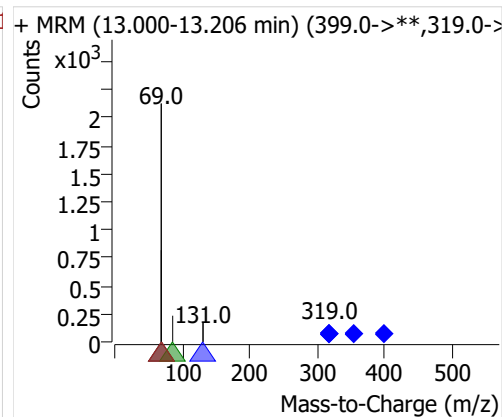
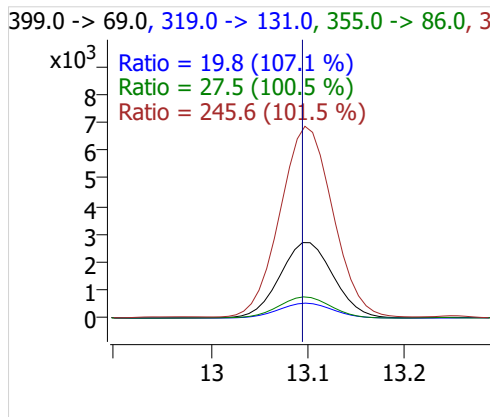
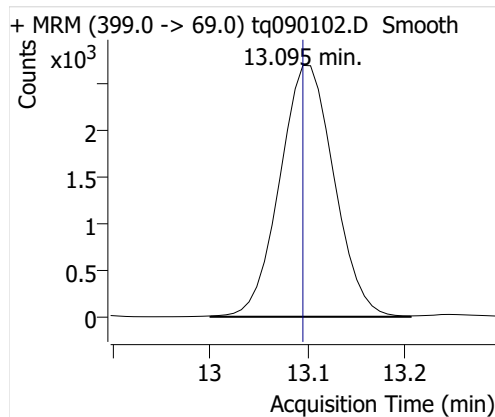
4:2 FTOH



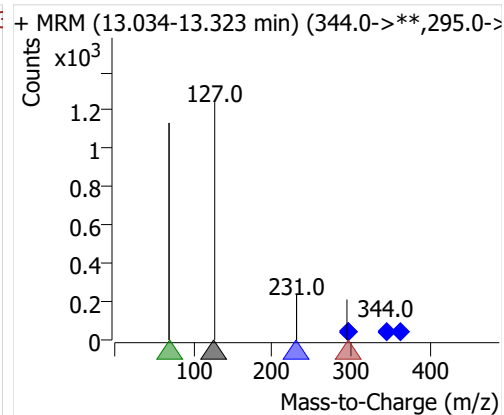
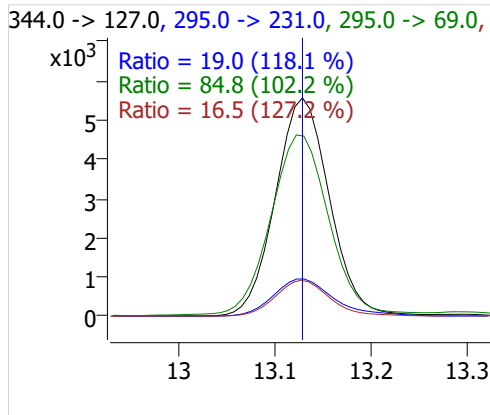
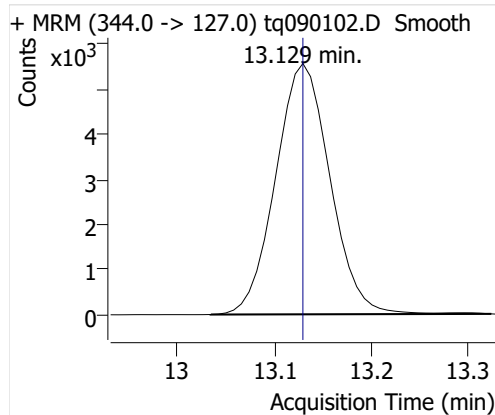
5:2sFTOH



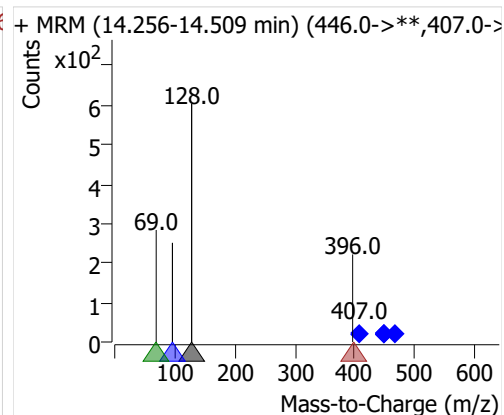
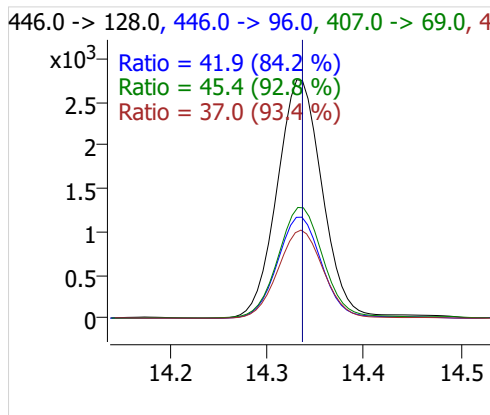
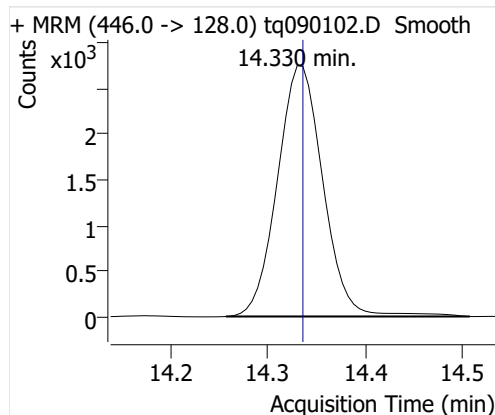
7:2sFTOH



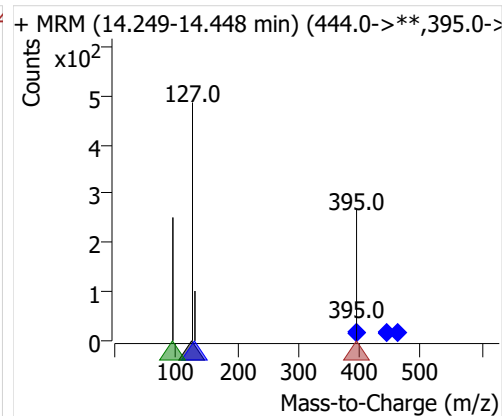
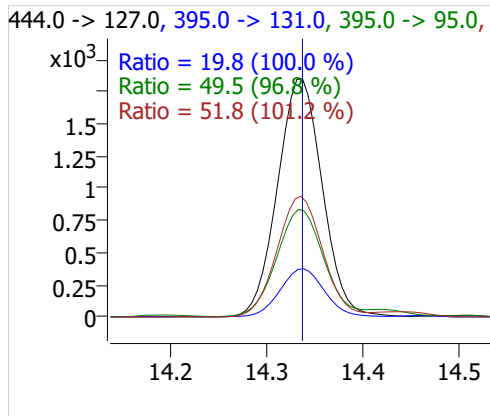
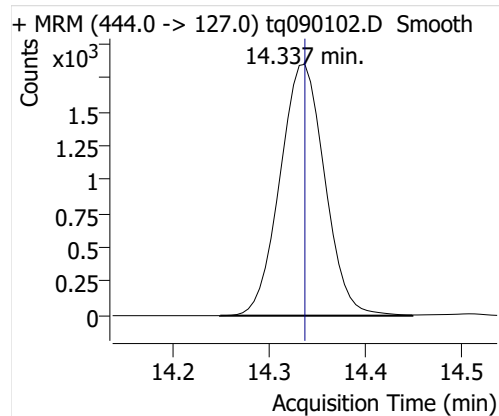
6:2 FTOH



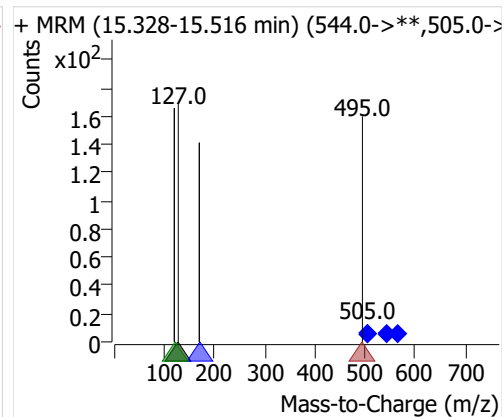
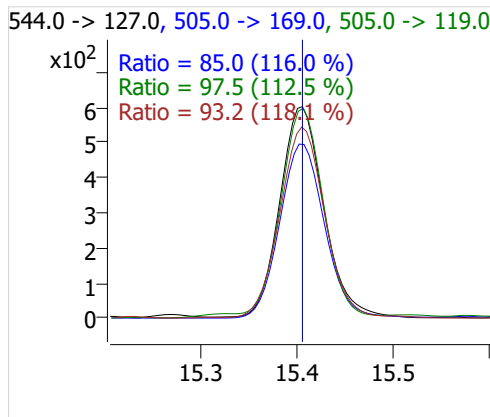
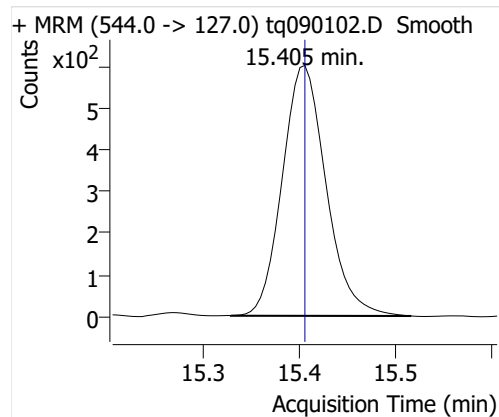
8:2 FTOH-C13



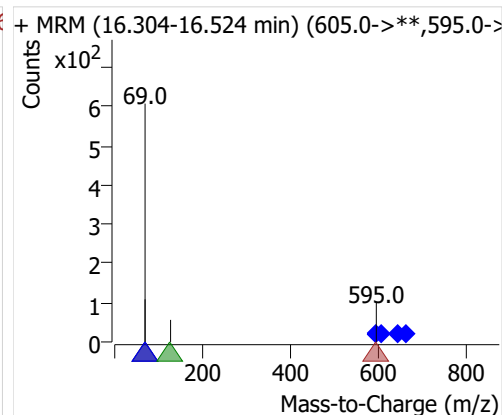
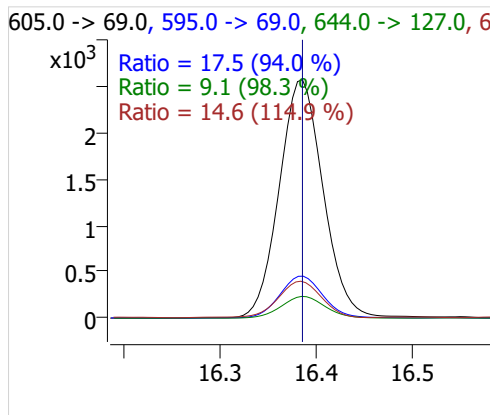
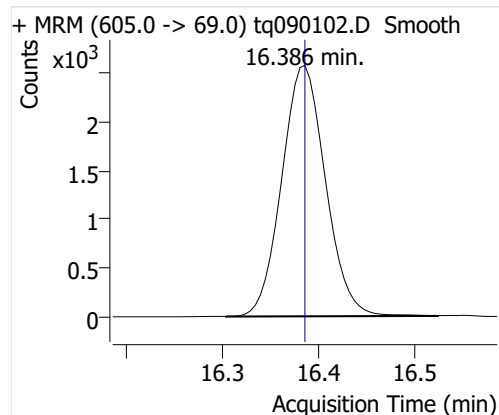
8:2 FTOH



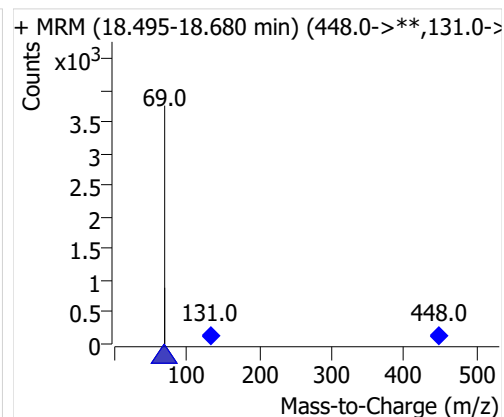
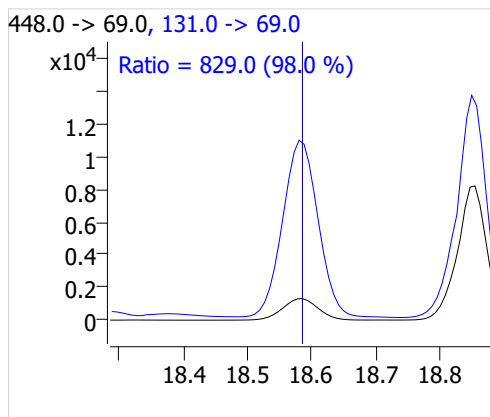
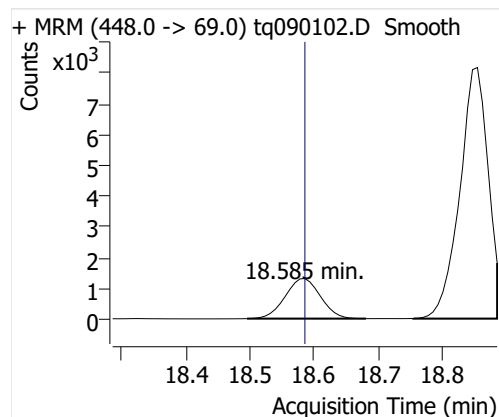
10:2 FTOH



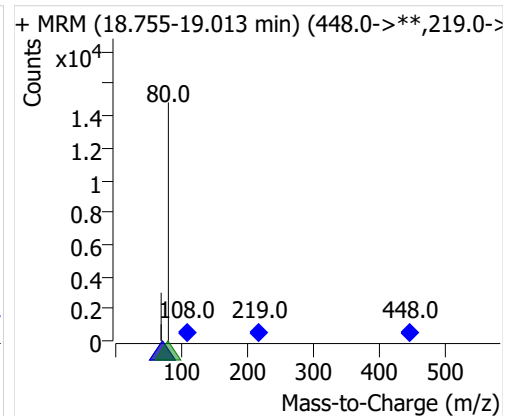
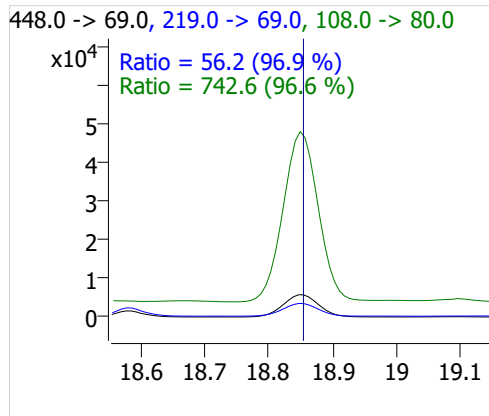
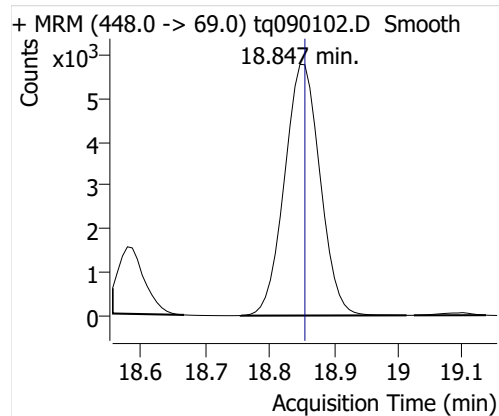
12:2 FTOH



NMeFOSA



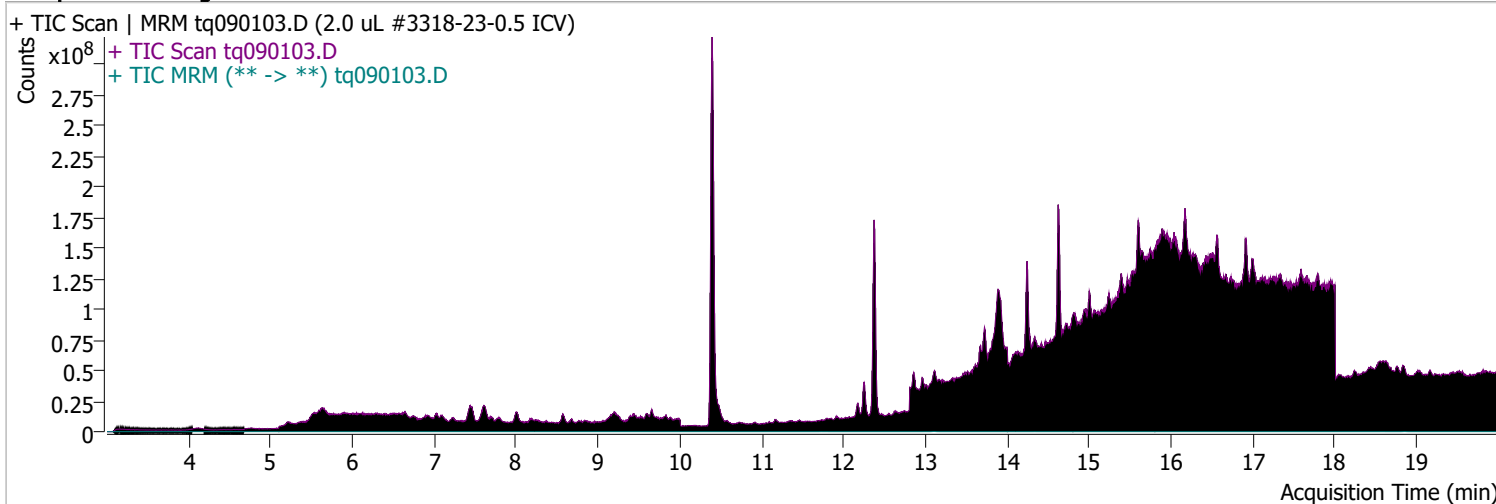
NETFOSA



Quantitative Analysis Sample Report

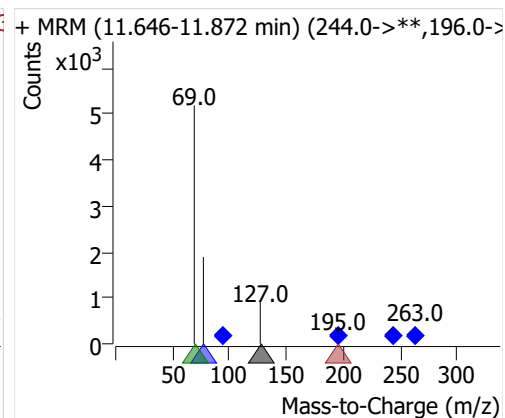
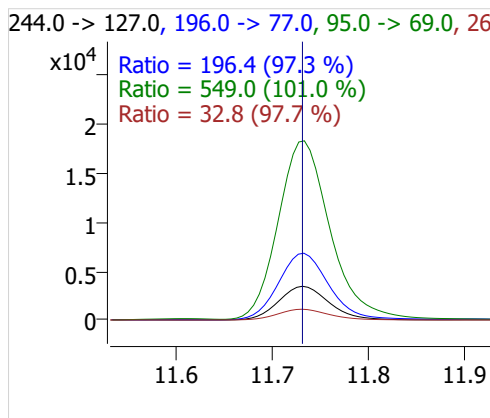
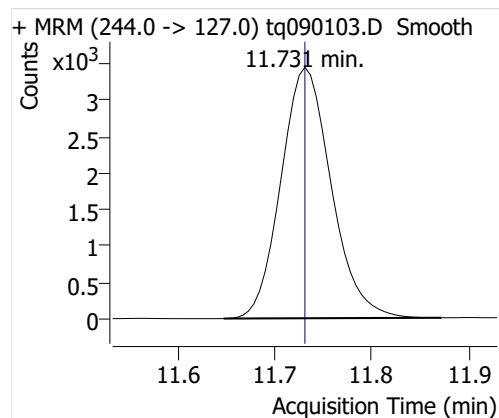
Batch Path D:\MassHunter\GCMS\1\data\01sep22\QuantResults\01sep22.batch.bin
Analysis Time 9/14/2022 9:28 AM **Analyst Name** DESKTOP-R0LAL7E\analyst
Report Time 9/22/2022 10:51:20 AM **Reporter Name** DESKTOP-R0LAL7E\analyst
Last Calib Update 9/6/2022 9:10 AM **Batch State** Processed
Quant Batch Version 10.1 **Quant Report Version** 10.1
Acq. Time 9/1/2022 1:17 PM **Data File** tq090103.D
Sample Type QC **Sample Name** 2.0 uL #3318-23-0.5 ICV
Dilution 1 **Acq. Method** tq22m0831

Sample Chromatogram

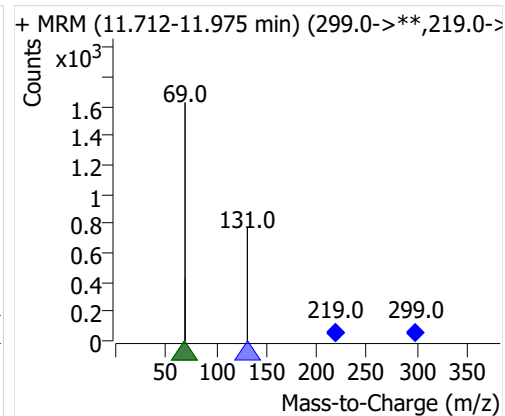
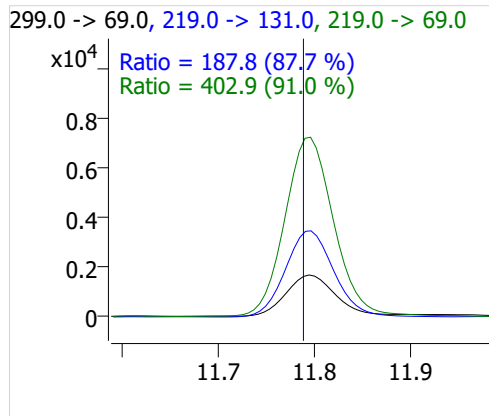
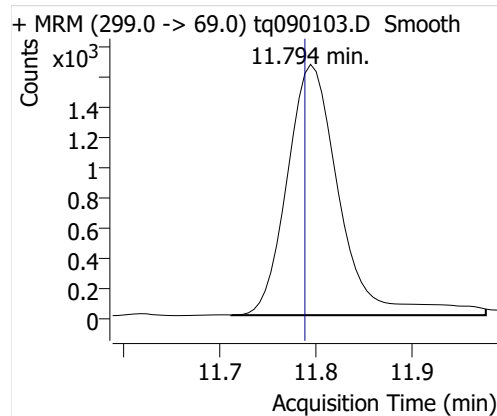


Compound	ISTD	RT	Resp.	ISTD Resp.	Resp. Ratio	Final Conc	Units
4:2 FTOH	6:2 FTOH-C13	11.731	12468	27754	0.4492	1.0798	ng
5:2sFTOH	6:2 FTOH-C13	11.794	6274	27754	0.2261	1.2816	ng
7:2sFTOH	6:2 FTOH-C13	13.103	11473	27754	0.4134	1.0944	ng
6:2 FTOH	6:2 FTOH-C13	13.129	22587	27754	0.8138	1.0556	ng
8:2 FTOH-C13	6:2 FTOH-C13	14.336	9395	27754	0.3385	1.0954	ng
8:2 FTOH	6:2 FTOH-C13	14.337	6647	27754	0.2395	1.0654	ng
10:2 FTOH	6:2 FTOH-C13	15.405	2593	27754	0.0934	1.2426	ng
12:2 FTOH	6:2 FTOH-C13	16.386	8091	27754	0.2915	1.0232	ng
NMeFOSA	6:2 FTOH-C13	18.585	4916	27754	0.1771	0.9870	ng
NEtFOSA	6:2 FTOH-C13	18.855	22628	27754	0.8153	1.0152	ng

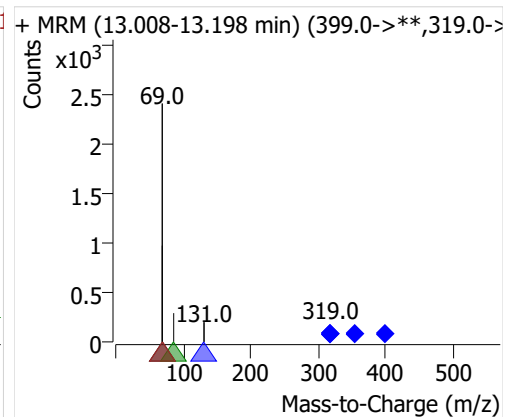
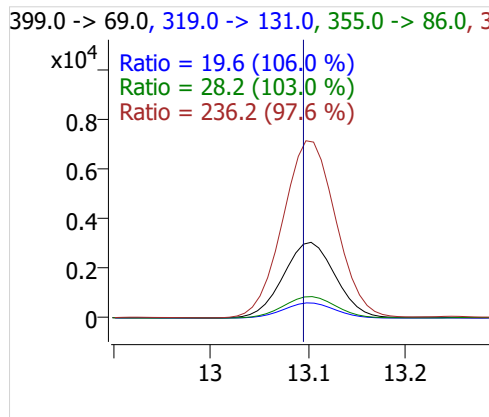
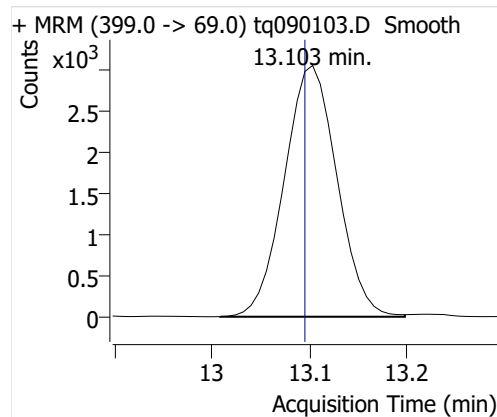
4:2 FTOH



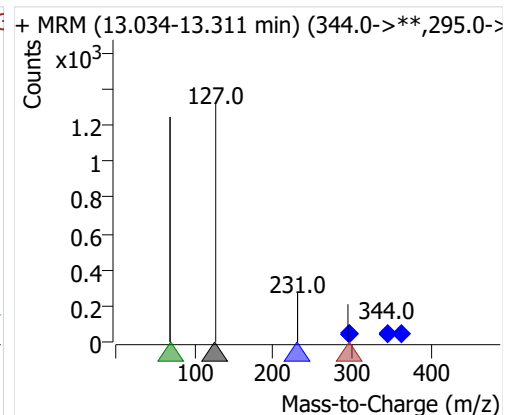
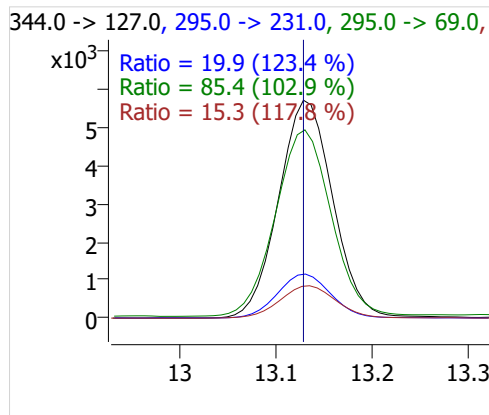
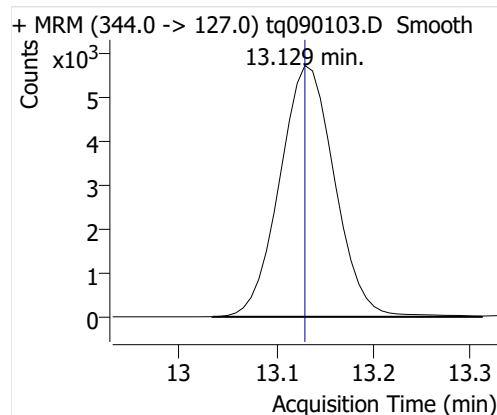
5:2sFTOH



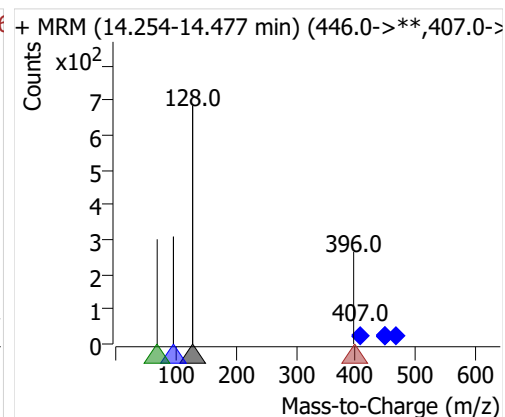
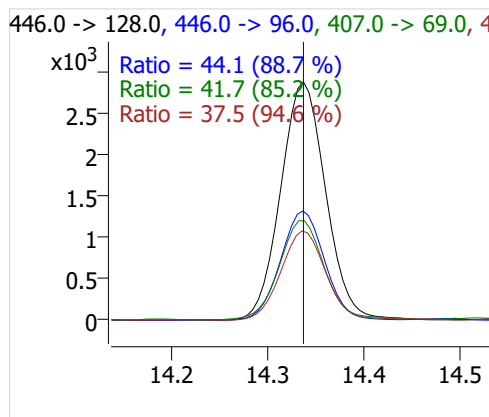
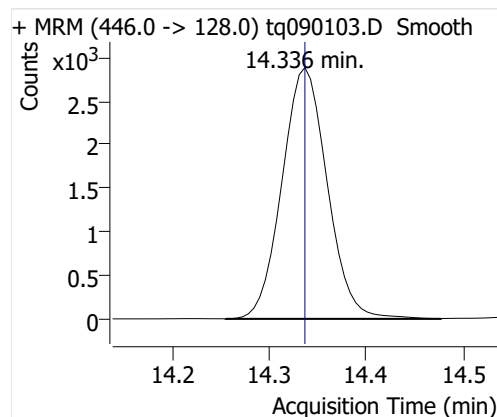
7:2sFTOH



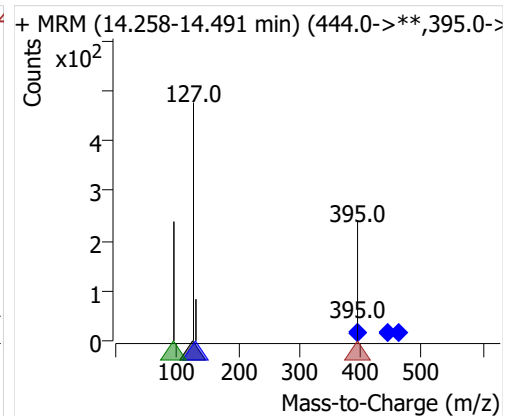
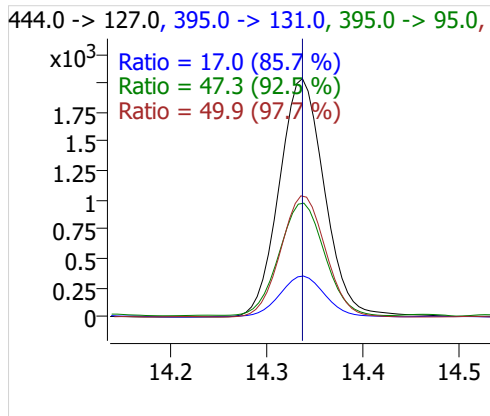
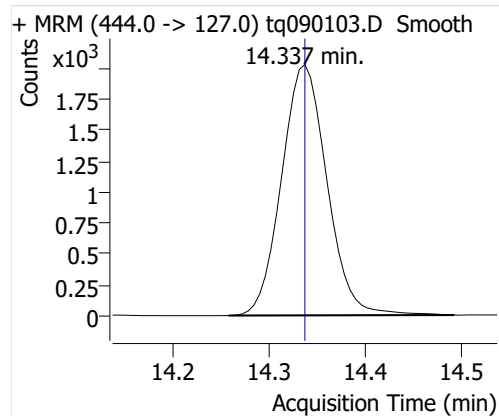
6:2 FTOH



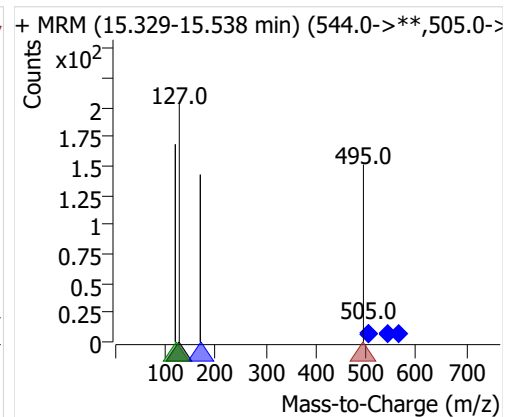
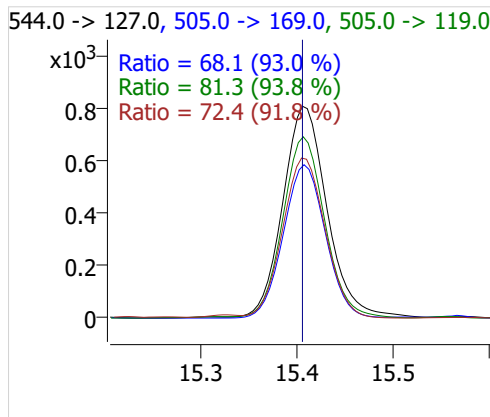
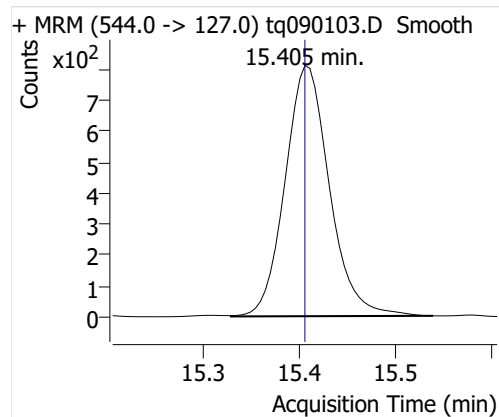
8:2 FTOH-C13



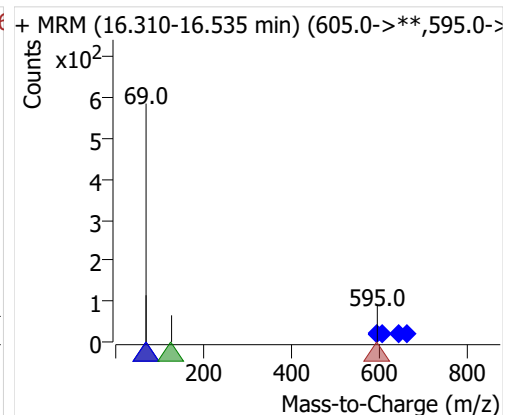
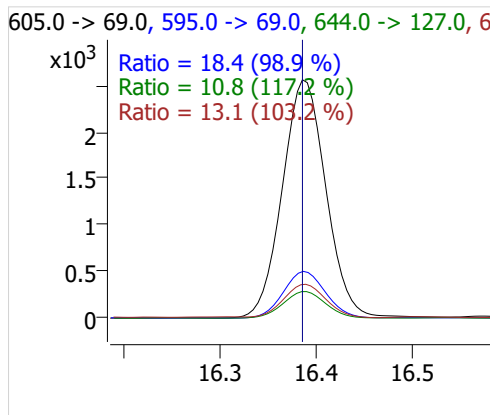
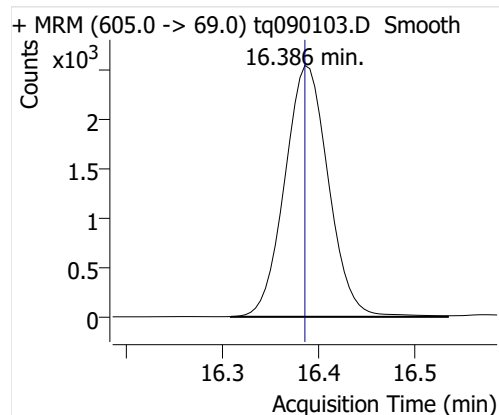
8:2 FTOH



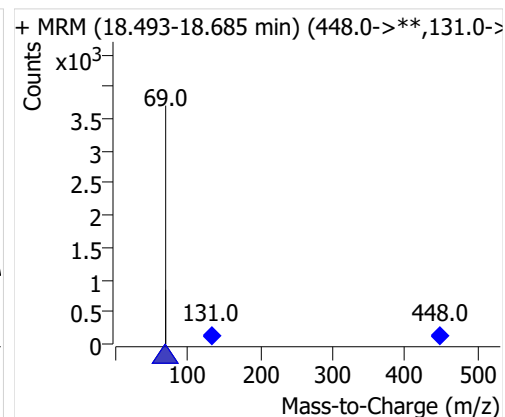
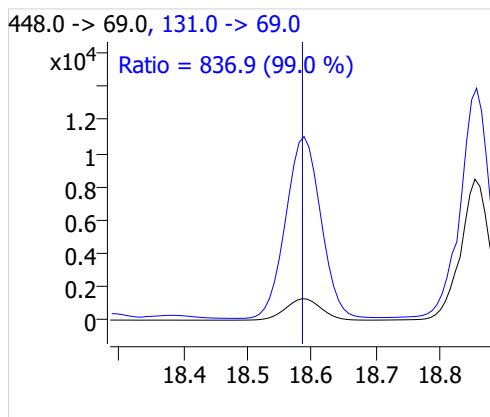
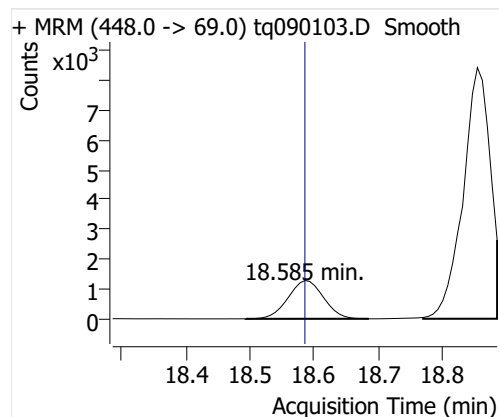
10:2 FTOH



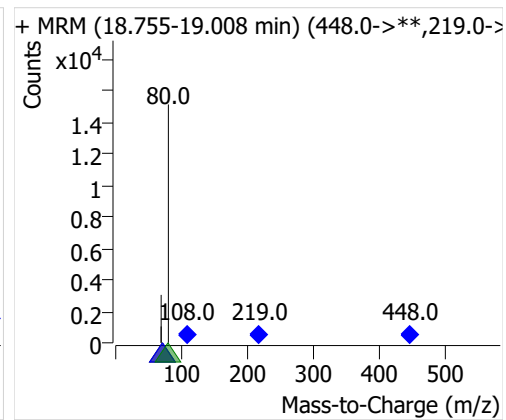
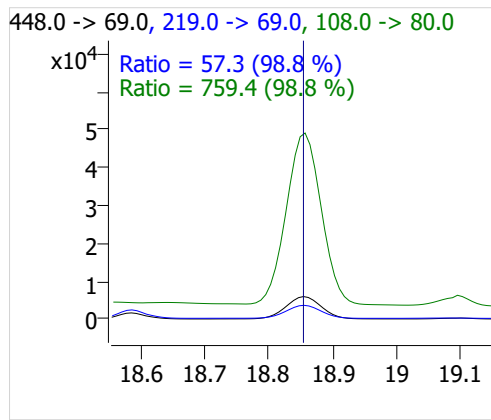
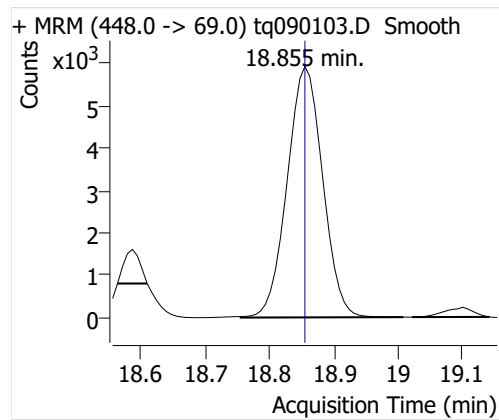
12:2 FTOH



NMeFOSA



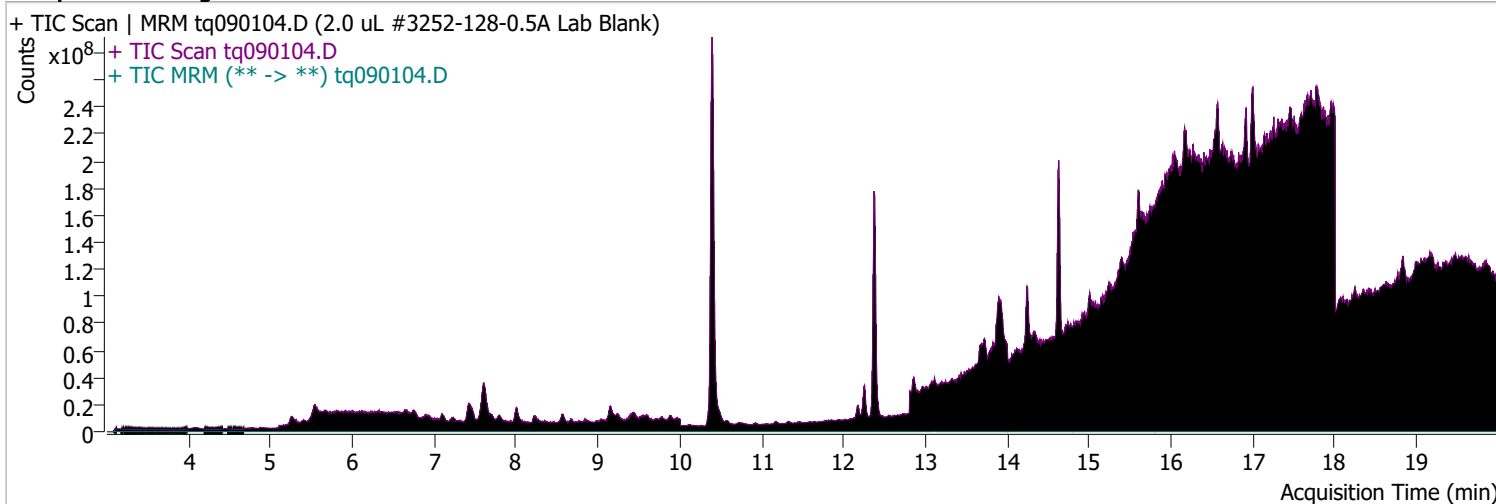
NETFOSA



Quantitative Analysis Sample Report

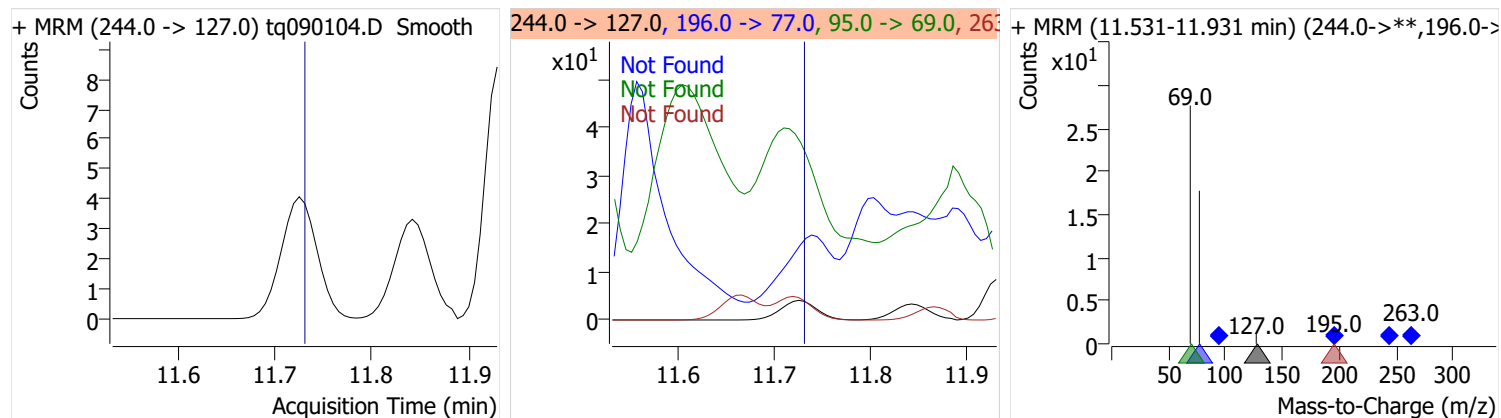
Batch Path	D:\MassHunter\GCMS\1\data\01sep22\QuantResults\01sep22.batch.bin		
Analysis Time	9/14/2022 9:28 AM	Analyst Name	DESKTOP-R0LAL7E\analyst
Report Time	9/22/2022 10:51:21 AM	Reporter Name	DESKTOP-R0LAL7E\analyst
Last Calib Update	9/6/2022 9:10 AM	Batch State	Processed
Quant Batch Version	10.1	Quant Report Version	10.1
Acq. Time	9/1/2022 1:57 PM	Data File	tq090104.D
Sample Type	Sample	Sample Name	2.0 uL #3252-128-0.5A Lab Blank
Dilution	1	Acq. Method	tq22m0831

Sample Chromatogram

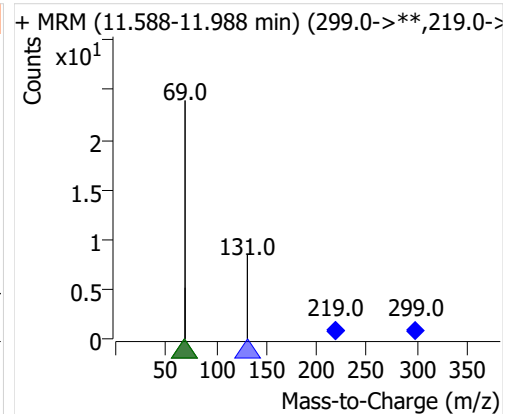
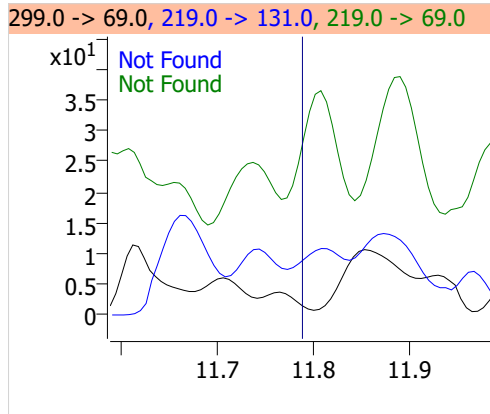
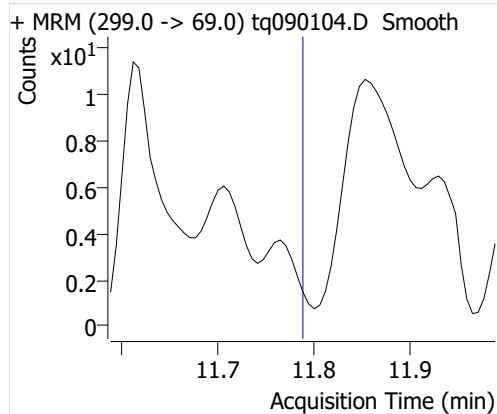


Compound	ISTD	RT	Resp.	ISTD Resp.	Resp. Ratio	Final Conc	Units
4:2 FTOH	6:2 FTOH-C13			25678		ND	ng
5:2sFTOH	6:2 FTOH-C13			25678		ND	ng
7:2sFTOH	6:2 FTOH-C13			25678		ND	ng
6:2 FTOH	6:2 FTOH-C13			25678		ND	ng
8:2 FTOH-C13	6:2 FTOH-C13	14.336	8271	25678	0.3221	1.0424	ng
8:2 FTOH	6:2 FTOH-C13			25678		ND	ng
10:2 FTOH	6:2 FTOH-C13			25678		ND	ng
12:2 FTOH	6:2 FTOH-C13			25678		ND	ng
NMeFOSA	6:2 FTOH-C13			25678		ND	ng
NEtFOSA	6:2 FTOH-C13			25678		ND	ng

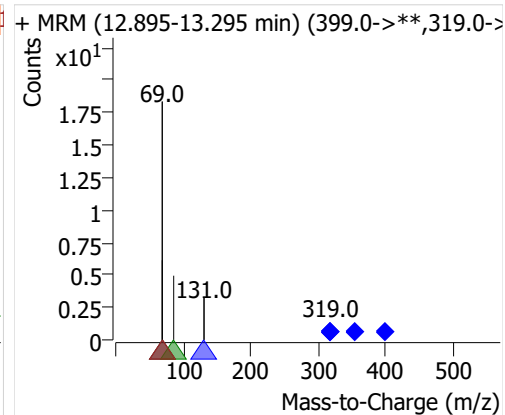
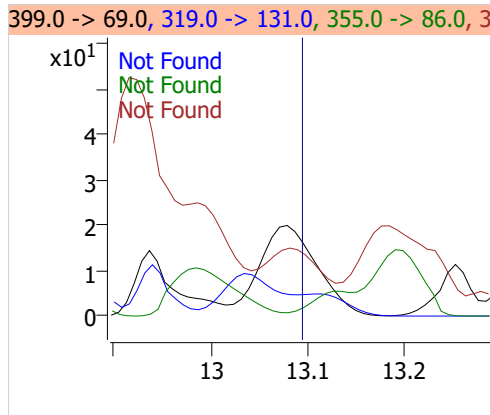
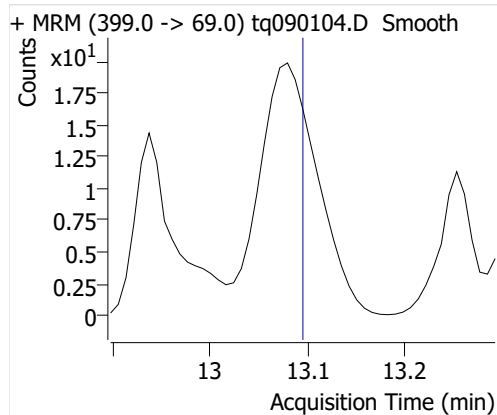
4:2 FTOH



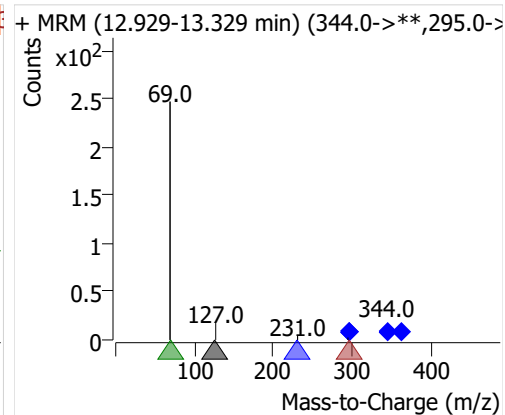
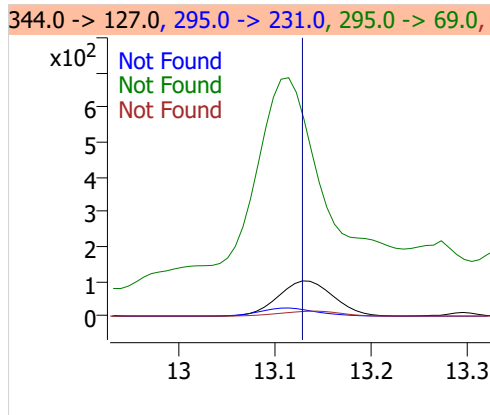
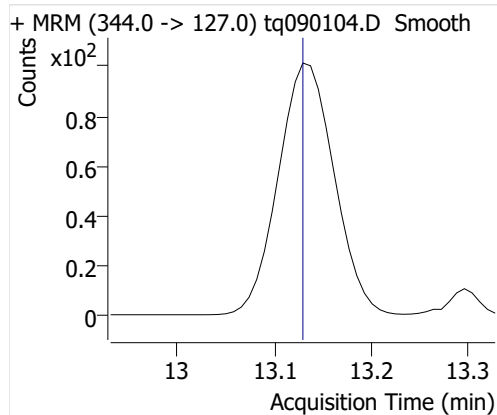
5:2sFTOH



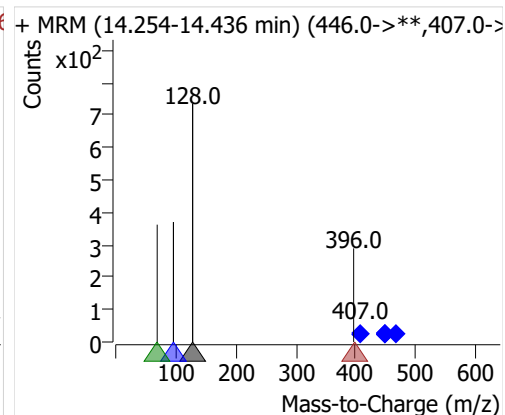
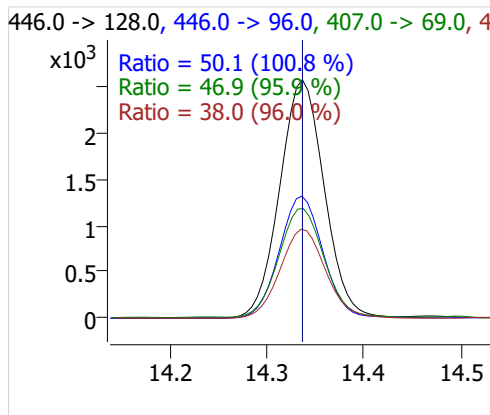
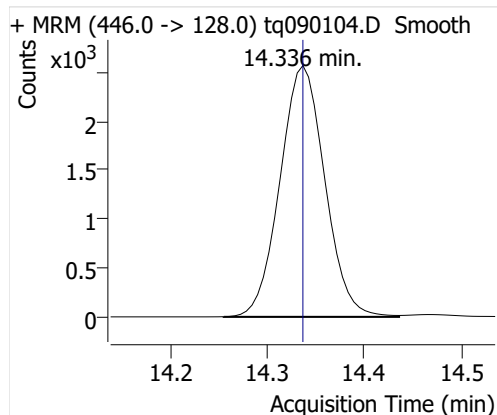
7:2sFTOH



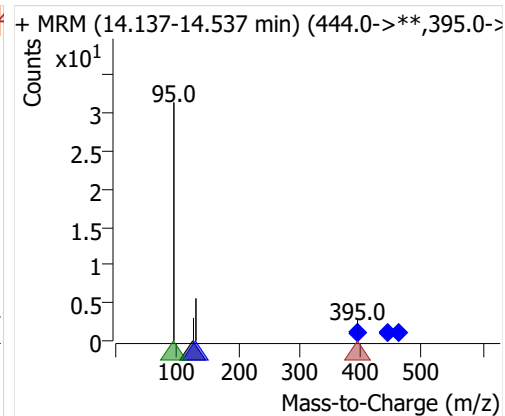
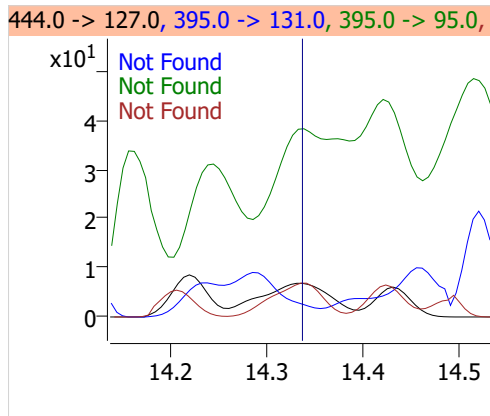
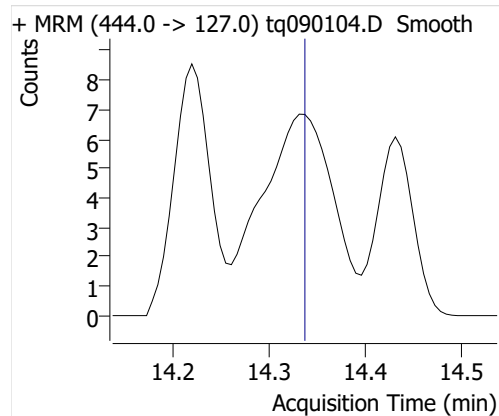
6:2 FTOH



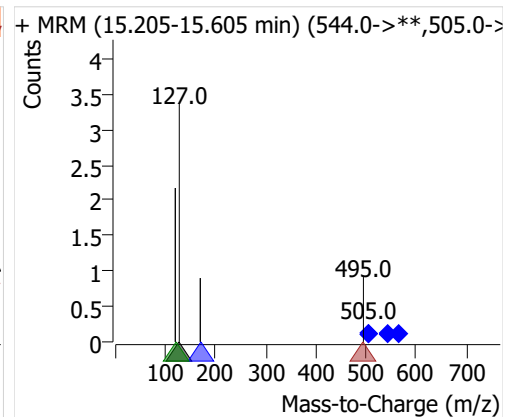
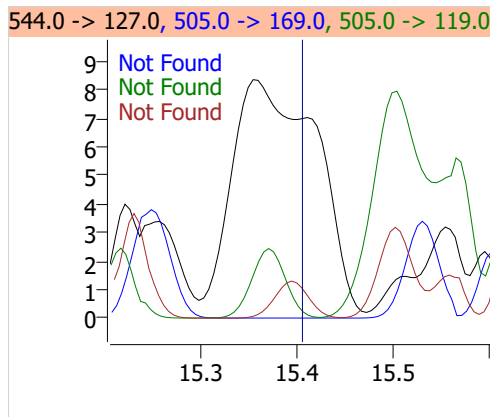
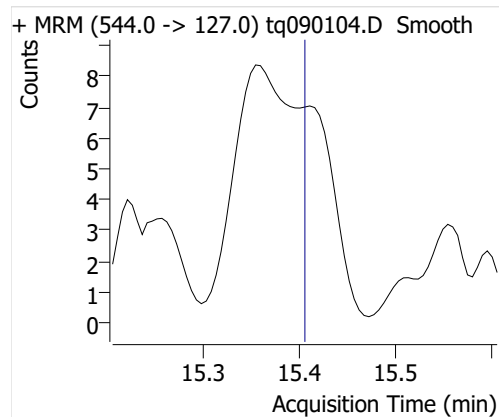
8:2 FTOH-C13



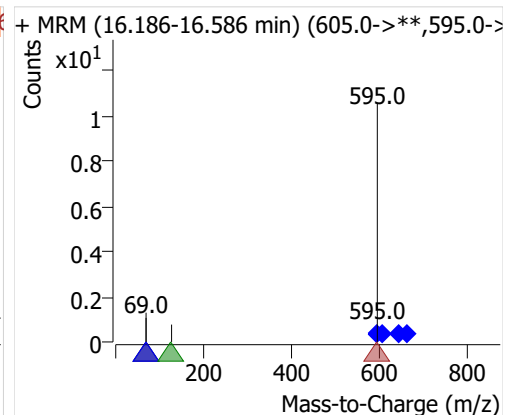
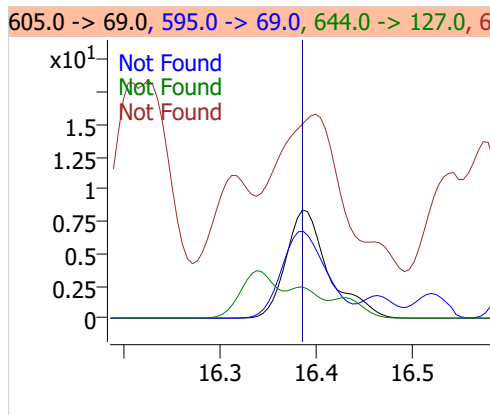
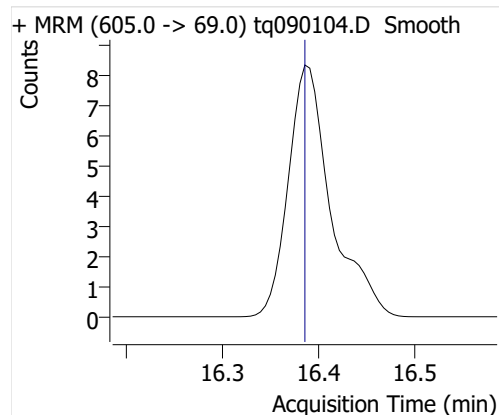
8:2 FTOH



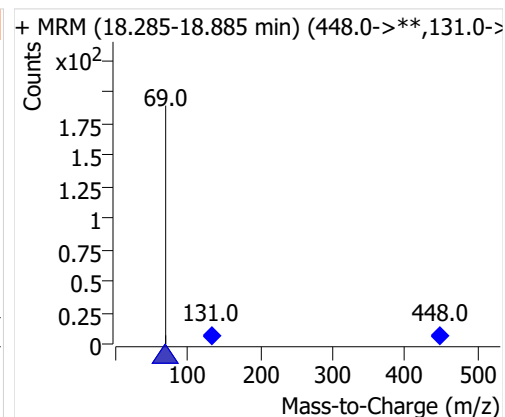
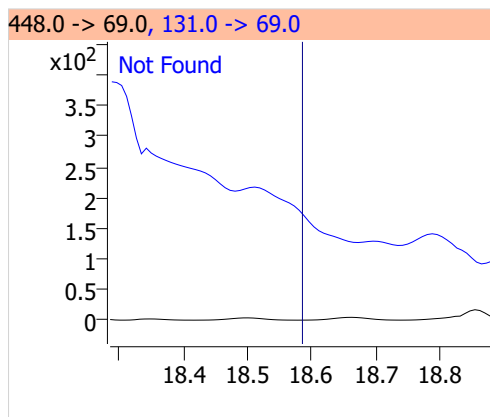
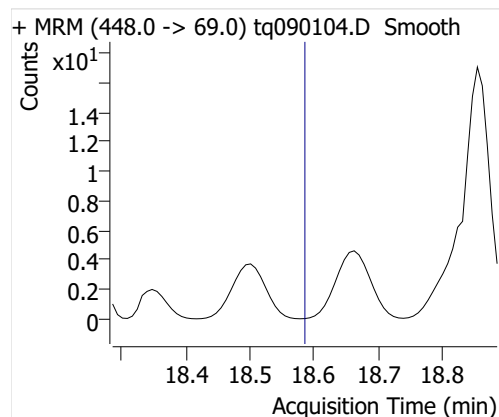
10:2 FTOH



12:2 FTOH



NMeFOSA



NETFOSA

